



## Let's share some DESIGN love!

Enter the first-ever, '*Sleigh the Holiday Card Competition*.' The winning design will be printed and represent the College of Design's annual Holiday greeting that is sent to influential members of the College community. PLUS, the winning entry also receives \$250.00 in prize money.

Open to ALL College of Design students  
DEADLINE: November 1<sup>st</sup> @ 10 a.m.

### RULES:

Submitted Designs must be:

1. Holiday-ish but, not religious, can be inspirational
2. Memorable! (not something that is immediately thrown in the trash!)
3. Clever in construction; something that they may open, close, fold...\*
4. Include the theme of *Design for Life / Designlife* with some type of holiday 'flavor'
5. Include the NC State College of Design logo and conform to brand compliance\*\*
6. **Entries must be submitted by November 1<sup>st</sup> @ 10 a.m.**  
Format: PDF; email to: [CollegeofDesign@ncsu.edu](mailto:CollegeofDesign@ncsu.edu) with  
Subject Line: Holiday Card Submission; include full name, whether you have submitted for design option 1 or 2\*, and any additional context around your submission that you feel is relevant.
7. All mediums are acceptable; however, the entry needs to be printed\* (traditional method)
8. Entries must conform to either Option 1 or Option 2 layouts\* (see diagrams below);

### JURY SELECTION:

A jury of faculty and staff of the College will review all (blind) submissions to select winner.  
Winner will be announced on or before November 10<sup>th</sup>.

- \* Submitted designs must be set up to be printed using either Option 1 or Option 2 layouts;  
Highly encouraged to use InDesign for the project, however, Illustrator may be considered if set up is print ready;
- \*\* Entries will not be judged on brand compliance, however, winning entry will need to comply.

Winning entry: All native files (images, fonts, program files) need to be submitted by November 15<sup>th</sup> and remain the property of the College. Student agrees to allow the College to modify as needed for printing or other promotional uses.

### OPTION #1

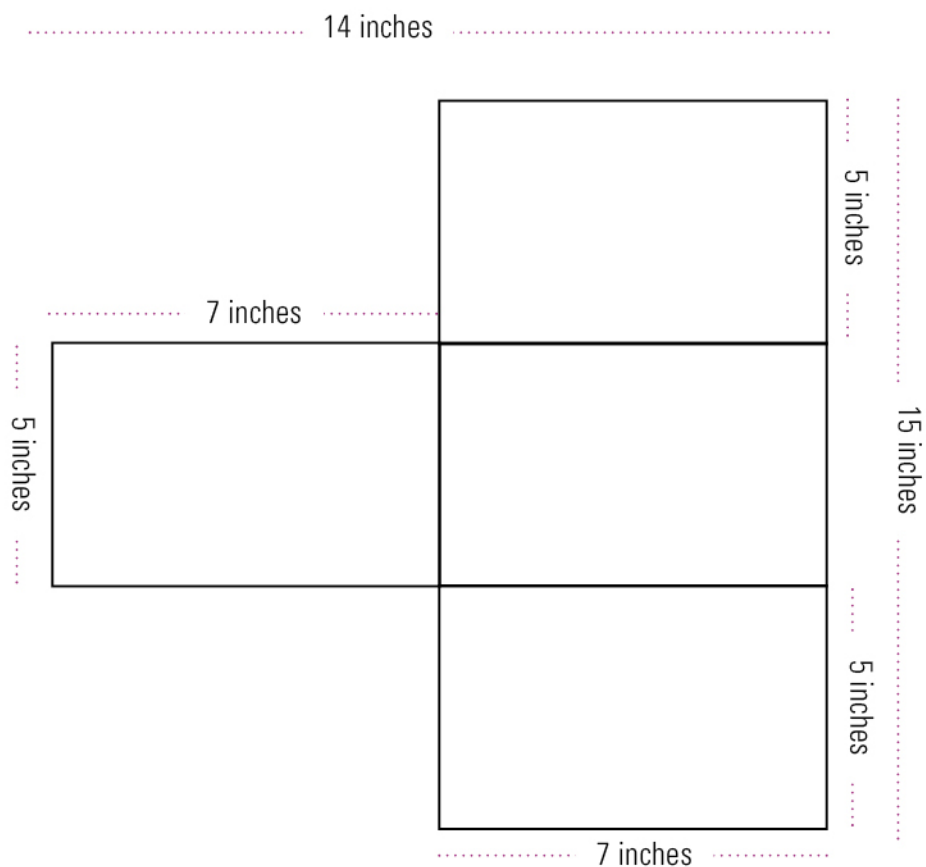
Flat: 14 x 15

Folds to 7 x 5

Stock: #80 Dull Cover

Ink: 4/4 with Bleeds

Each panel is 7 x 5. You can develop the card using this option and make unique use of each fold. The card **MUST** fold to 7 x 5 using this layout and there can be no additional cuts or folds added.



**OPTION #2**

Flat: 14 x 15

Folds to 7 x 5

Stock: #80 Dull Cover

Ink: 4/4 with Bleeds

Each panel is 7 x 5. You can develop the card using this option and make unique use of each fold. The card **MUST** fold to 7 x 5 using this layout and there can be no additional cuts or folds added.

